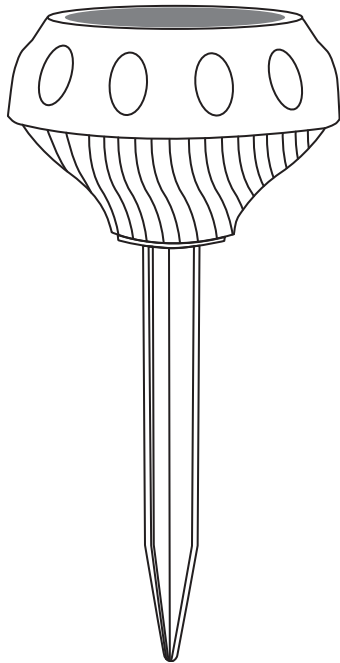


Solar Light User Manual



Product Parameters

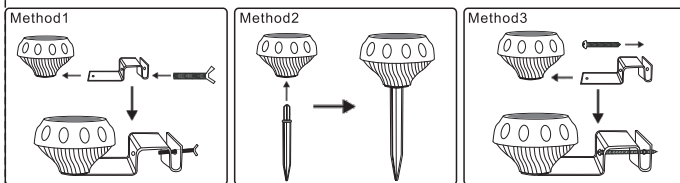
Solar Panel	Polysilicon 5V 0.5W	Material	ABS
Battery	Li-ion battery 3.7V 2000mAh	The lamp power	2W
LED	10PCS SMD2835 LED	Luminous Flux	140LM
Charging Time	8 hours	Lighting Time	8 hours
Lighting Mode	Microwave induction + dim light	Sensing Distance	3-5M



Accessories

Name	lamp	installation bracket	extension pole	screw 1	screw 2
Photo					

Installation instructions



Three Installation Methods

1. Fix the installation bracket on the fence by screw 1 and then fasten the lamp on it.
2. Insert the plastic extension pole into the ground and then fasten the lamp on it.
3. Fix the installation bracket on the wall by screw 2 and then fasten the lamp on it.

Tips

1.Unlock and activate the solar lamp:

The internal battery is locked for safety reason during delivery, so user should press the ON/OFF button to unlock it.

2.How to install the lamp?

Please use the provided accessories to install the lamp on the fence, wall or lawn.

3.Charge the solar panel

Face the solar panel to the sun directly to make sure it gets adequate sunshine, avoid any obstructions or dust. Generally it can be fully charged one day under good sunshine.

4.Light sensor function

Light turns on at night or in darkness, and turns off in daytime or bright area automatically.

5.Dim light function

When someone approaches, the lamp will turn to bright light, and after 30 seconds, it will turn to dim light to save power.

Attention

1. Charge the lamp at least 8 hours under the sun when use it the first time.
2. The lamp has light control function, it will turn off under bright area.
3. The lighting time of the lamp depends on the brightness and range of irradiation of the sunlight, please be aware of the charging time each day.
4. Please make sure no obstructions on the solar panel and avoid installing at bright place at night.
5. Do not open the charging part if you are not a professional technician in case any damage to the lamp.